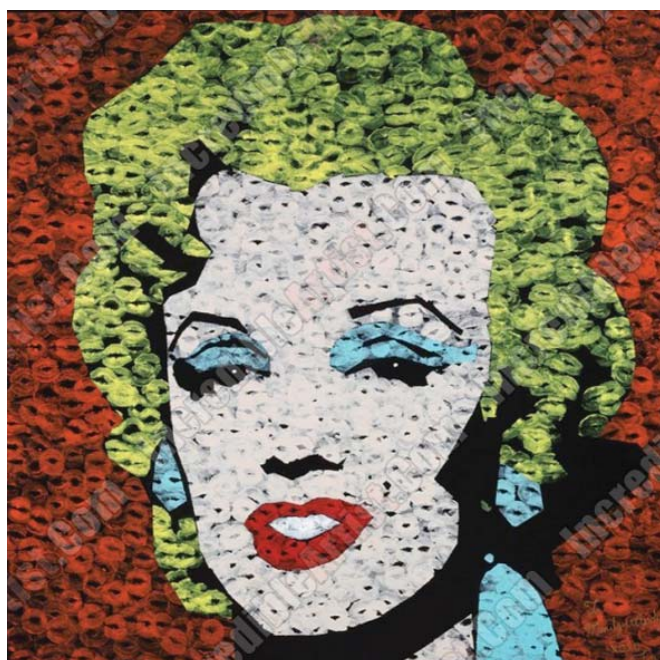


# Cancer research is costly and complicated. Helping fund research is simple.

Now you can own and enjoy Incredible Art and participate in a cure.



Painting by TAG.

**Art4aCure** is focused around art, and features more than a hundred oil paintings, watercolors, mixed media and photographs, alongside ceramics, glassware and sculpture. Most of the artwork will be on display at Premiere Oncology, but many donated pieces will also be available through the online auctions. Featured Southern California artists include painter **Vernon Finney**, award-winning watercolorist **Diane Morgan**, surrealist **Snake Jagger**, **Craig Pop Artist**, **Fortune Sitole**, **TAG**, photographers **Stephan Canthal** and **Robert Kawika Sheer**, painter **Malcolm Doran**, assemblage artists **Linda & Charles Perkins**, glass sculptor **Scott Slagerman**, and many more.

Making important advances through Phase I cancer research can only happen when we all chip in and do our part. Join in on the fun and spectacular imagery on hand at these very special events, proudly sponsored by [IncredibleArtist.com](http://IncredibleArtist.com)

## JULY INAUGURAL CELEBRATION MEET THE ARTIST PARTY

Friday, July 18, **Opening Reception** 5 pm to 9 pm

Saturday, July 19, **Art Brunch** 10 am to 2 pm

Saturday, July 19, **Celebrate Art into the Night** 7 to 10 pm

Light nosh & refreshments will be served.

## SEPTEMBER ENCORE EVENT MEET THE ARTIST PARTY

Friday, September 12, **Encore Reception** 5 pm to 9 pm

Saturday, September 13, **Art Brunch** 10 am to 2 pm

Saturday, September 13, **Celebrate Art into the Night**

7 pm to 10 pm. Light nosh & refreshments will be served.

## ONLINE SILENT AUCTION

**Summer Auction**, July 17 - August 7

**Autumn Auction**, September 11 - October 1

Made possible through the generosity of businesses who have donated Incredible gifts and services as well as artists who have donated an eclectic collection of art, photography, pottery and sculpture, all awaiting your bid.

Please call **ROBBIE GLUCKSON** at 310 570-1474 or via email at [rgluckson@premiereoncology.org](mailto:rgluckson@premiereoncology.org) for more information.

A portion of the proceeds from Art4aCure will benefit the Premiere Oncology Foundation.

The Premiere Oncology Foundation is dedicated to enhancing the care of cancer patients and caregivers through psychosocial support, research, education and integrative medicine. TO DONATE, simply mail your check to the Premiere Oncology Foundation, 2020 Santa Monica Blvd., Suite 600, Santa Monica, CA 90404. For more information, please contact us at 310.570.1474 or send us an e-mail at [foundationinfo@premiereoncology.org](mailto:foundationinfo@premiereoncology.org).